


Awning Accessories

LIGHTING	
Thule LED Strip	56
Thule LED Strip Sideways	57
Thule LED Mounting Rail TO 6300/6200/9200	58
Thule Tent LED Mounting Rail TO 6300/6200	59
Thule Tent LED Mounting Rail TO 5200	60

WIND PROTECTION	
Thule Tension Rafter G2	62
Thule Tension Arm Set TO 5200	63
Thule Tension Arm Set TO 6300	63
Thule 3rd Support Leg	64
 Thule Fabric Clamps	64
Thule Hold Down Kit	65
Thule Hold Down Side Strap Kit	65

MOTORISATION	
Thule Motor Kit TO 5200	66
Thule Motor Kit TO 6300	67
Thule Motor Kit TO 8000/9200	68

SEALINGS	
Thule Gutter	69
Thule Sealing Rubber	69
Thule EPDM Sealing	70

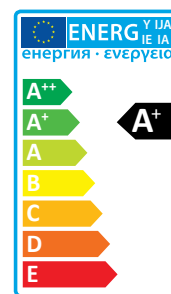
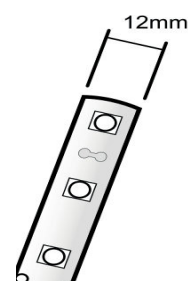
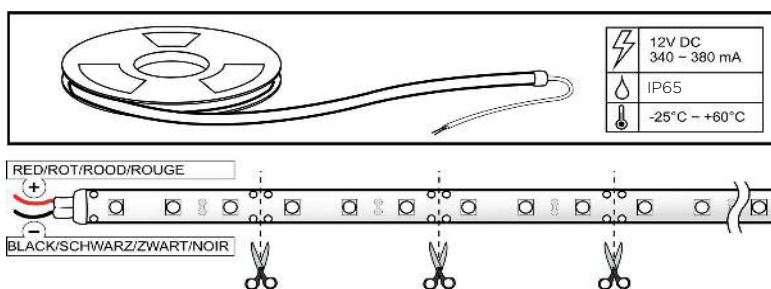
MAINTENANCE	
Thule PVC Cleaner	70
Thule Repair Patch	71

Thule LED Strip

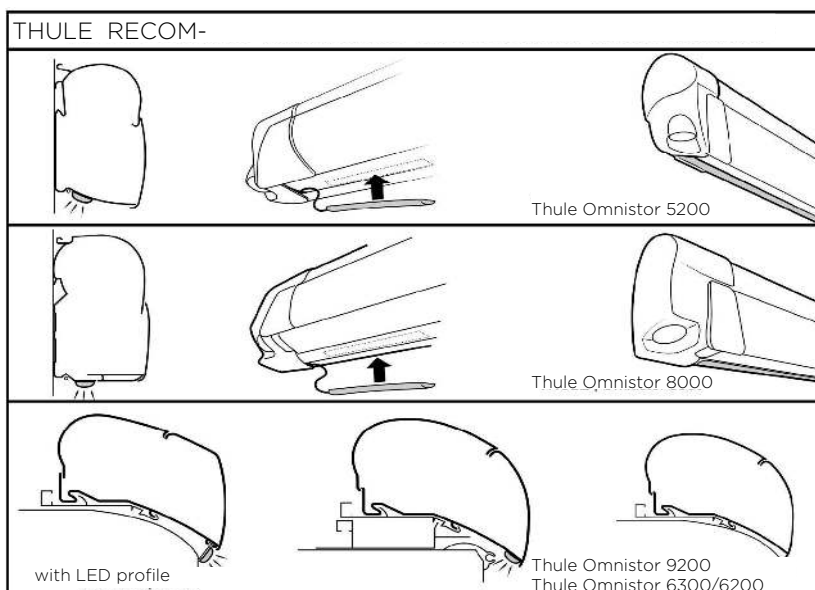
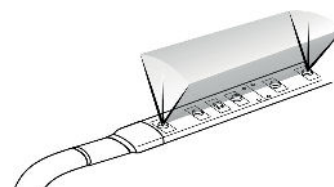


INFO

- Flexible white LED strip, delivered with high quality 3M tape on the back
- Working voltage 12 VDC
- Power consumption 340-380 mA per meter
- 60 power LEDs per meter
- 1 meter connection cable included
- Warm white light with light starkness up to 300 Lumen
- Suitable for outdoor usage: waterproof IP65
- Can be shortened each 5 cm (possible to solder cables on cutting points)
- Can be taped on most standard even materials and surfaces
- Can also be used inside the vehicle to create more light
- Long lifetime



307135	Thule LED Strip - 4.00 m	20 kWh/1000h
307136	Thule LED Strip - 5.00 m	25 kWh/1000h
307137	Thule LED Strip - 6.00 m	30 kWh/1000h

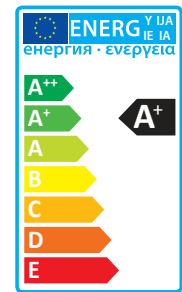


Thule LED Strip Sideways

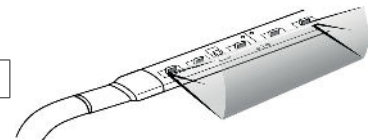


INFO

- Flexible black LED strip, delivered with high quality 3M tape on the back
- Working voltage 12 VDC
- Power consumption 340-380 mA per meter
- 60 power LEDs per meter
- 1 meter connection cable included:
 - NOTE:** In combination with Thule Tent LED Mounting Rail TO 6300/6200 (301664) is the connection cable on the right side
- Warm white light with light starkness up to 300 Lumen
- Suitable for outdoor usage: waterproof IP65
- Can be shortened each 5 cm (possible to solder cables on cutting points)
- Can be taped on most standard even materials and surfaces
- Can also be used inside the vehicle to create more light
- Long lifetime
- Width: 8 mm
- Length: 4.00 m
- Colour: anthracite



301660	Thule LED Strip Sideways - 4.00 m	20 kWh/10000h
--------	-----------------------------------	---------------



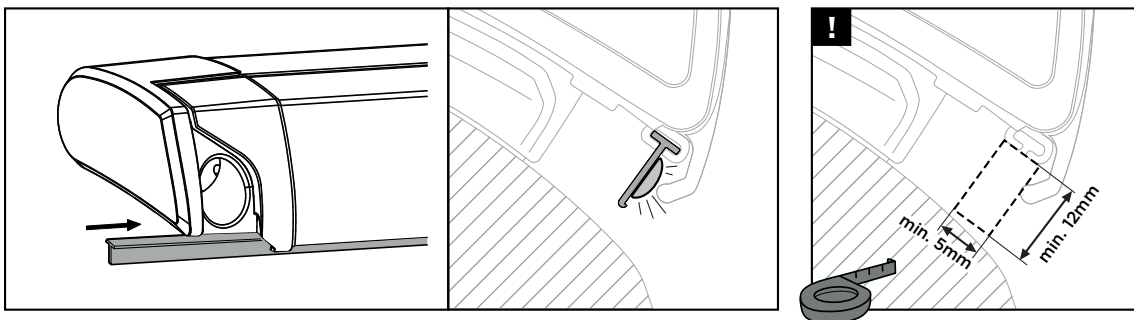
RELATED PRODUCT

- Thule Tent LED Mounting Rail TO 6300/6200 - 301664

Thule LED Mounting Rail TO 6300/6200/9200

INFO

- For the installation of a LED strip on roof awnings Thule Omnistor 6300 | 6200 | 9200
- An aluminum profile fits the opening in the bottom of the awning cassette
- The LED light can be used both when the awning is opened or closed
- Cannot be used with the Thule Awning Fixation Kit TO 6300/6200/9200 (307050)
- Content:
 - 6x 1.00 m (packed in a black cardboard tube)



THULE LED STRIP IN COMBINATION WITH THULE OMNISTOR ADAPTERS FOR ROOF MOUNTING

		Thule LED Mounting Rail possible	LED strip can be glued on bracket	LED strip can be glued on wall
Thule Omnistor Adapters for roof mounting - Universal				
308xxx	Flat Roof - 3.00m - 6.00m	DRS*		•
308054	Installation profiles: 2x mounting rails + adapter			•
308055	Installation profiles: 3x mounting rails + adapter			•
308299	Roof Top	DRS*		•
Thule Omnistor Adapters for roof mounting - Manufacturer				
309892	Carthago Chic < 2014 - 3.50m	•	•	
309888	Carthago Chic < 2014 - 4.00m	•	•	
309889	Carthago Chic < 2014 - 4.50m	•	•	
309890	Carthago Chic < 2014 - 5.00m	•	•	
309891	Carthago Chic < 2014 - 5.50m	•	•	
307250	Carthago C-Line > 2014 - 3.50m	•	•	
307251	Carthago C-Line > 2014 - 4.00m	•	•	
307252	Carthago C-Line > 2014 - 4.50m	•	•	
307253	Carthago C-Line > 2014 - 5.00m	•	•	
307254	Carthago C-Line > 2014 - 5.50m	•	•	
301439	Carthago C-Line > 2014 - 6.00m	•	•	
301415	Concorde - 6.00m			•
308110	Esterel - 4.00m	•		
308107	Giottiline (set: 2x10 cm + 2x 40cm)	•		

* DRS = Depending on roof shape

		Thule LED Mounting Rail possible	LED strip can be glued on bracket	LED strip can be glued on wall
Thule Omnistor Adapters for roof mounting - Motorhome				
309976	Hobby Camper 2013 (set: 2x 27cm + 2x 50cm)			•
3080xx	Hymer SX - 3.50m - 6.00m			•
30695x	Hymer 2013 - 3.50m - 6.00m	•	•	
30704x	LMC Liberty TI / TEC - 3.00m - 6.00m		•	
301473	LMC Explorer - Cruiser MJ2018 - 3.50m	•		
301474	LMC Explorer - Cruiser MJ2018 - 4.00m	•		
301475	LMC Explorer - Cruiser MJ2018 - 4.50m	•		
301480	LMC Explorer - Cruiser MJ2018 - 5.00m	•		
301476	LMC Explorer - Cruiser MJ2018 - 5.50m	•		
308078	Carthago Malibu - 3.50m	•		
308079	Carthago Malibu - 4.00m	•		
301417	Carthago Malibu - 4.50m	•		
301418	Carthago Malibu - 5.00m	•		
301423	Niesmann Smove Model 6.9B/Q - 3.00m	•		
301424	Niesmann Smove Model 7.4B/E - 3.50m	•		
309945	Rapido Distinction - 4.00m	•	•	
309944	Rapido Distinction - 4.50m	•	•	

Thule Omnistor Adapters for roof mounting - Caravan				
309982	Adria Caravan > 2015 (set: 2x 50cm + 2x 27cm)			•
306757	Caravan Roof Adapter (set: 3x 1m)	•		
30xxxx	Caravan Roof Adapter	•		
309692	Fendt Brillant - up to length 4.50m	•		
308663	Hobby Caravan 2009 (set: 2x 27cm + 2x 50cm)			•
309819	Hobby Premium & Ontour (set: 2x 27cm + 2x 50cm)			•
306948	Hobby Caravan > 2014			•
30695x	Hymer 2013 Nova Roof	•	•	
306794	Autosleepers 2013	•		

Thule Omnistor Adapters for roof mounting - Van				
308058	Ducato Jumper Boxer 1994-2006	•		
301649	Ducato Jumper Boxer > 2007 - L2H2 3.25m	•		
301650	Ducato Jumper Boxer > 2007 - L3H2 3.75m L4H2 4.00m	•		
308073	Mercedes Sprinter > 2007 VW Crafter 2007-2016	•		
308059	Renault Master Opel Movano 1998-2010	•		
308959	Renault Master Opel Movano > 2011	•		

306777	Thule LED Mounting Rail TO 6300/6200/9200
--------	---

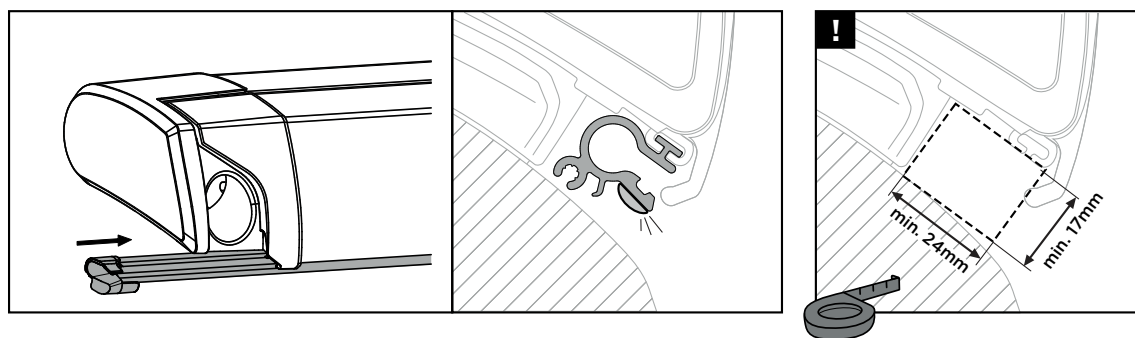
RELATED PRODUCTS

- Thule LED Strip 4.00 m - 307135
- Thule LED Strip 5.00 m - 307136
- Thule LED Strip 6.00 m - 307137

Thule Tent LED Mounting Rail TO 6300/6200

INFO

- This caravan profile can be slid at the bottom of roof awnings:
 - Thule Omnistor 6300 | 6200 mounted on a van
 - Thule Omnistor 6300 | 6200 | 9200 mounted on a motorhome, only if you have min. 24 mm depth and min. 17 mm height (see figure)
- Makes it possible to have light on the outside even when the awning is closed
- Provided with a channel which makes it possible to install a Thule QuickFit tent or to hang up the Thule Organizers
- Fits only with the Thule Led Strip Sideways - not included
- Colour: anthracite
- Content:
 - 3 profiles (3x 1.30 m) to fit a 4.00 m awning length - can be cut to the required length
 - 2 end caps for a perfect finish



301664

Thule Tent LED Mounting Rail TO 6300/6200

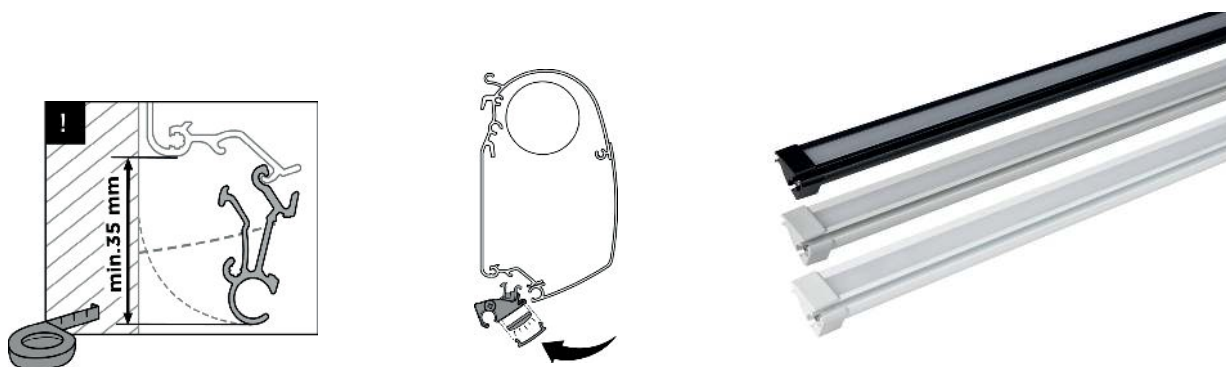
RELATED PRODUCT

- Thule LED Strip Sideways - 301660

Thule Tent LED Mounting Rail TO 5200

INFO

- This profile makes it possible to mount the Thule QuickFit tent on wall awning Thule Omnistor 5200
- The profile is clicked at the bottom of the awning cassette and is fixed with a hex wrench
- It covers the adapters and is provided with a channel to slide the tent in
- Additional space for a Thule LED Strip - to have light on the outside even when the awning is closed
- Available in different lengths and 3 colours: white, anodised and anthracite
- Content:
 - Aluminium caravan profile
 - 2 end caps
 - diffuse filter for the LED channel



LENGTH	WEIGHT WITHOUT LED	WEIGHT WITH LED	WHITE	ANODISED	ANTHRACITE
3.00 m	1.2 kg	1.4 kg	301250	301255	301260
3.50 m	1.4 kg	1.6 kg	301251	301256	301261
4.00 m	1.6 kg	1.8 kg	301252	301257	301262
4.50 m	1.8 kg	2 kg	301253	301258	301263
5.00 m	2 kg	2.2 kg	301254	301259	301278

RELATED PRODUCTS

- Thule LED Strip 4.00 m - 307135
- Thule LED Strip 5.00 m - 307136
- Thule LED Strip 6.00 m - 307137

Thule Tension Rafter G2

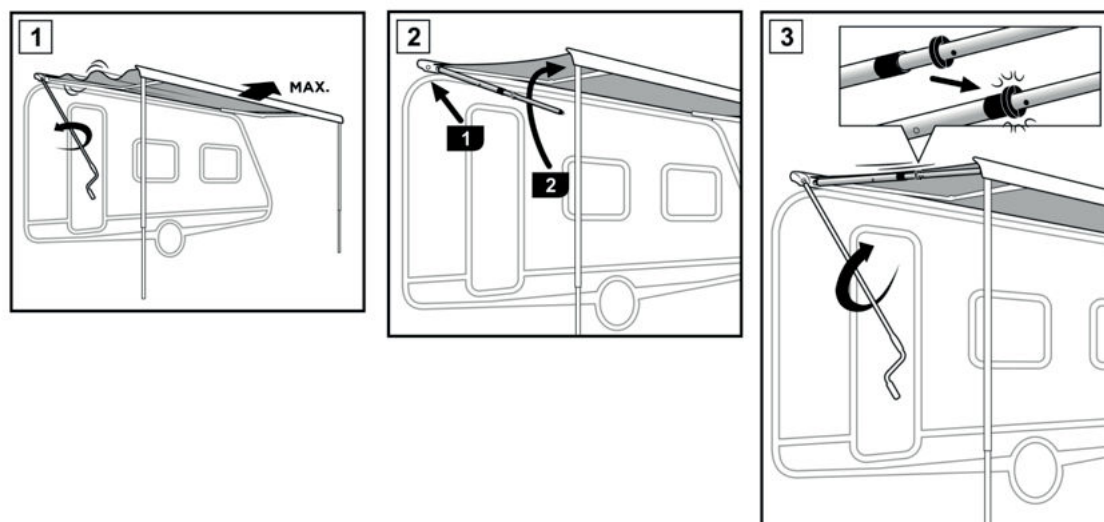
INFO

- Additional awning rafter to ensure an optimal tensioned awning fabric for increased wind resistance
- Innovative concept: optimal tension ensured by length lock system
- Improved awning fixation parts
- No heavy manpower needed for the installation
- Easy to use in only 3 simple steps:
 - Step 1: Open the awning completely
 - Step 2: Place the rafter into the awning. This is effortless due to the smooth integrated spring
 - Step 3: Slightly roll-up the awning fabric until it's blocked
- Length Lock can be set on different projections for a perfect combination with other Thule accessories (e.g. Smart Panels, awning tents)
- Made of durable materials: anodised aluminium in combination with high impact plastics



THULE TENSION RAFTER G2		
PROJECTION	AWNING TYPE	SKU NO
2.00 m*	TO 5200/4900/5003/5002	307307
	TO 6300/6200/6002	307308
2.50 m	TO 5200/4900/5003/5002	307309
	TO 6300/6200/6002	307310
	TO 1200	307311
2.75 m	TO 8000/6900	307312
3.00 m	TO 9200	307313

*The rafter fits only at the side of the awning, not at the middle



Thule Tension Arm Set TO 5200

INFO

- Only suitable for wall awning Thule Omnistor 5200
- Sturdy spring arms with patented tension arms ensure a perfectly tensioned awning fabric and increase the wind-resistance
- Standard integrated for awning lengths from 4.02 m and more
- Optional for awning lengths 3.02 m and 3.52 m
- Content:
 - set of 2 tension arms



301295	Thule Tension Arm Set TO 5200
--------	-------------------------------



Thule Tension Arm Set TO 6300

INFO

- Only suitable for roof awning Thule Omnistor 6300
- Sturdy spring arms with patented tension arms ensure a perfectly tensioned awning fabric and increase the wind-resistance
- Standard integrated for awning lengths from 3.75 m and more
- Optional for awning lengths 3.00 m, 3.25 m and 3.50 m
- Not suitable for awning length 2.60 m
- Content:
 - set of 2 tension arms

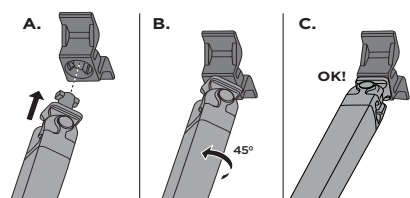


302095	Thule Tension Arm Set TO 6300
--------	-------------------------------

Thule 3rd Support Leg

INFO

- To reinforce the longer lengths of awning tents Thule Panorama and Thule Residence G2 | G3 in combination with a rafter
- Not suitable to use in combination with awning tent Thule QuickFit
- Can be installed on all awning types from 3.75 m length on, with the exception of the Thule Omnistor 4900 and Thule Omnistor Caravan Style
- Content:
 - 1 support leg



306778	Thule 3rd Support Leg
--------	-----------------------

New Thule Fabric Clamps

INFO

- Set of two clamps to avoid a flappy awning
- Provide a more secure fastening between the awning fabric and the tension or blocker rafter to prevent the unpleasant noise of a flapping awning fabric due to wind
- Just click it on the rafter, put the fabric in between and tighten with the handle
- Use up to two clamps on one side of the awning
- Fits:
 - the oval side blocker rafter
 - Thule Tension Rafter G2
 - the square telescopic tension rafter for Thule Omnistor 1200
- Content:
 - 2 clamps



309698	Thule Fabric Clamps
--------	---------------------

Thule Hold Down Kit

INFO

- Prevents the awning and tent from flying up
- Installed over the entire length between the spring arms and the fabric
- For any type of awning and tent up to and including 6 m
- Not suitable to use in combination with awning tents Thule Panorama, Thule Residence G2 | G3 and Smart Panels
- Content:
 - 1 black strap (11 m)
 - installation material
 - supports
 - storage bag
 - pegs



307906

Thule Hold Down Kit

Thule Hold Down Side Strap Kit

INFO

- Prevents the awning and tent from damage due to high wind or storm
- Attached to the support legs of Thule Omnistor awnings in order to prevent damage to the fabric
- Can easily be used in combination with a Thule awning tent and Smart Panels
- Content:
 - 2 black straps (both 3.00 m)
 - installation material
 - supports
 - storage bag
 - pegs



307916

Thule Hold Down Side Strap Kit

Thule Motor Kit TO 5200

INFO

- 12 VDC motor for wall awning Thule Omnistor 5200
- Retrofit installation: by replacing the gearbox of a manual TO 5200 awning (only for awning lengths from 3.02 m and more)
- The motor is pre-installed on a limited range:
 - awning lengths from 3.00 m to 5.00 m
 - fabric finish Mystic Grey 31
- Easy operation:
 - one-touch switch to start the motor
 - motor stops automatically when awning is fully opened or closed
 - Auto-Tension: motor retracts in open position
- Integrated manual override with hand crank in case of power failure
- Motor with thermal protection
- EMC approved
- Reverse polarity and short circuit protected
- Comes with a relay in order to prevent that the awning can be operated while driving
- Only 1 kg additional weight compared to a manual awning
- Same design as a manual awning with only 3cm additional length
- Different colours available: white, anodised and anthracite
- Consumption: out 3A / in 7A / peak 17A
- Noise level: 65 dBA



301296	Thule Motor Kit TO 5200 - White
301297	Thule Motor Kit TO 5200 - Anodised
301298	Thule Motor Kit TO 5200 - Anthracite
301479	12V Motor cable 4 mm ² - 2x 12 m*

*The voltage should retain a minimum of 12V at the power source.

If due to the cable length, the resulting voltage at the motor drops below 9V at peak usage of 20.5A, the motor might stall. Thule advises to use \varnothing 4 mm² (AWG 11) copper wiring instead of \varnothing 2.5 mm² (AWG 13) when the connecting cable length exceeds 10 meters.

Thule Motor Kit TO 6300

INFO

- 12 VDC motor for Thule Omnistor 6300 awning
- Retrofit installation: by replacing the gearbox of a manual TO 6300 awning (only for awning lengths from 3.00 m and more)
- Pre-installed on a limited range:
 - awning lengths from 3.00 m to 5.00 m
 - fabric finish Mystic Grey 31
- Easy operation:
 - one-touch switch to start the motor
 - motor stops automatically when awning is fully opened or closed
 - Auto-Tension: motor retracts in open position
- Integrated manual override with hand crank in case of power failure
- Motor with thermal protection
- EMC approved
- Reverse polarity and short circuit protected
- Comes with a relay in order to prevent that the awning can be operated while driving
- Only 1 kg additional weight compared to a manual awning
- Same design as a manual awning with only 3 cm additional length
- Different colours available: white, anodised and anthracite
- Consumption: out 3A / in 7A / peak 17A
- Noise level: 65 dBA



302096	Thule Motor Kit TO 6300 - White
302097	Thule Motor Kit TO 6300 - Anodised
302098	Thule Motor Kit TO 6300 - Anthracite
301479	12V Motor cable 4 mm ² - 2x 12 m*

*The voltage should retain a minimum of 12V at the power source.

If due to the cable length, the resulting voltage at the motor drops below 9V at peak usage of 20.5A, the motor might stall. Thule advises to use \varnothing 4 mm² (AWG 11) copper wiring instead of \varnothing 2.5 mm² (AWG 13) when the connecting cable length exceeds 10 meters.

Thule Motor Kit TO 8000/9200

INFO

- 230 VAC motor for Thule Omnistor 8000 | 9200 awnings
- Includes remote control and relay
- A safety device ensures that the awning cannot be opened whilst the vehicle is moving
- Simple connection to a 230 VAC supply (with a 12V connection you can use a 300 Watt inverter, which is available from your dealer)
- Settings are programmed digitally so that the frame always closes correctly
- There is an emergency key so that the awning can be operated at any time, even during a power failure
- Use an inverter which meets these specifications:
 - input: 10-15 V DC
 - output: 230 VAC/50Hz
 - capacity: 300W permanent, 600W max
 - efficiency (for rectangle wave): min. 90%



THULE OMNISTOR 8000	
302530	Thule Motor Kit TO 8000 - White
302531	Thule Motor Kit TO 8000 - Anodised
302532	Thule Motor Kit TO 8000 - Cream

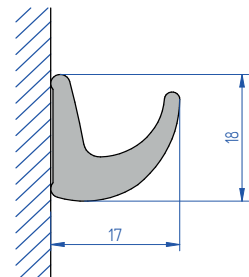
THULE OMNISTOR 9200	
302533	Thule Motor Kit TO 9200 - White
302534	Thule Motor Kit TO 9200 - Anodised
302535	Thule Motor Kit TO 9200 - Cream

Thule Gutter

INFO

- Self-adhesive drainage system
- Fits just below the awning
- Fits most caravans and motorhomes
- Content:
 - 1 gutter

SKU NO	WIDTH	HEIGHT	LENGTH
307947	17 mm	18 mm	3.50 m
307967	17 mm	18 mm	4.50 m
307900	17 mm	18 mm	30 m



Awning Accessories

Thule Sealing Rubber

INFO

- Ensures that the gap between the vehicle and the wall awning is sealed
- Can be cut to the exact length that is required

THULE OMNISTOR 5200 5003 8000		
SKU NO	WIDTH	LENGTH
307960	5 cm - Small	4.00 m
307901	5 cm - Small	30 m
307961	8 cm - Large	4.00 m
307904	8 cm - Large	30 m

THULE OMNISTOR 4900		
SKU NO	WIDTH	LENGTH
306892	6.2 cm - Medium	4.00 m
306891	6.2 cm - Medium	30 m

For TO 5200 | 5003 | 8000



For TO 4900



Thule EPDM Sealing

INFO

- Seals the gap between the vehicle and roof awning (TO 9200/6300/6200)
- Made from black EPDM foam with closed cell structure
- Thickness: 25 mm
- Width: 30 mm
- Self-adhesive
- Content:
 - 2x 2.00 m



308697	Thule EPDM Sealing
--------	--------------------



Thule PVC Cleaner

INFO

- An easy to use cleaner for PVC, awning fabric and other plastic materials
- Supplied in a user-friendly spray bottle
- Protects by applying a water-repellent and anti-static film
- Usage instruction: spray on the surface, rub with a damp cloth, rinse with clean water and let dry
- Composed with anionic (<0,5%) and non-ionic (<0,5%), biodegradable detergent
- Contains no abrasive or aggressive components
- Keep bottle out of children's reach
- Content:
 - Spray bottle (500 ml)



307585	Thule PVC Cleaner (per 24 pcs)
--------	--------------------------------

Thule Repair Patch

INFO

- To repair small holes in the awning or tent fabric
- Self-adhesive, transparent patches
- Dimensions: 7.5 x 15 cm
- Content:
 - 3 patches



306486

Thule Repair Patch

